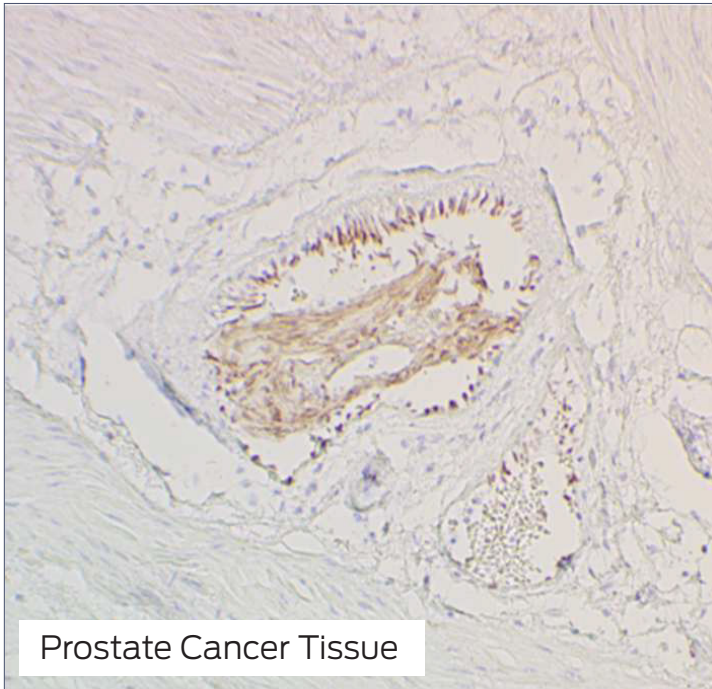
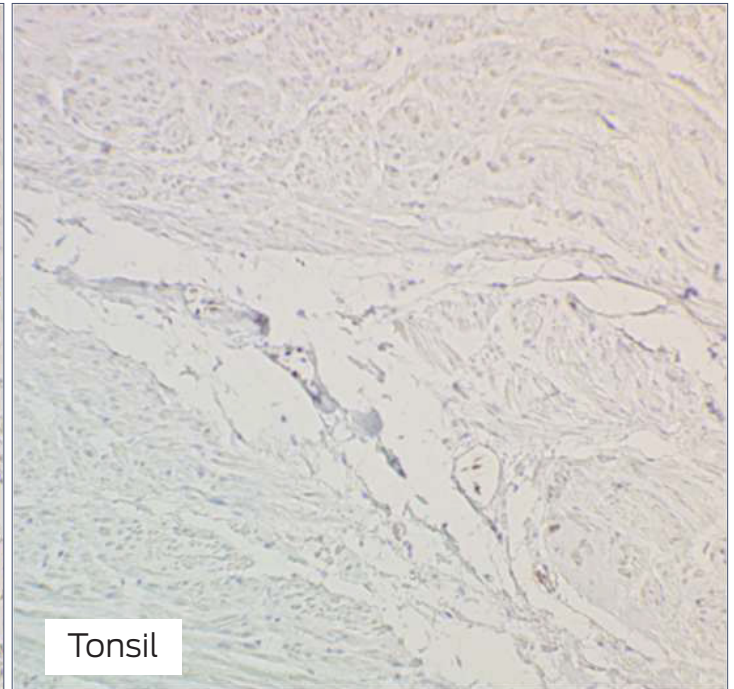


ERG

Positive tissue controls should only be utilized for monitoring the correct performance of processed tissues and test reagents, rather than as an aid in the interpretation of samples. If the positive tissue controls fail to demonstrate positive staining, results with the test specimens should be considered invalid.



Prostate Cancer Tissue



Tonsil

SPECIFICATIONS

Tissue

- (+) Prostate cancer tissue
- (+)/(-) Tonsil

Fixative

- 10% Neutral buffered formalin

Embedding

- Paraffin

Thickness

- 4 µm

Mounting

- Mounted on positively charged slides made of pure white glass; air dried

Storage Conditions

- RT, light-deprived, humidity-controlled

Notes

- Deparaffinize and rehydrate before use
- Custom modifications available, including tissue placement, drying method, section thickness, and/or slide glass

Variations

Model No.	Description	Contains
SC182-25	Control Slides, IHC, ERG, Box of 25	24 unstained, +1 stained
SC182-100	Control Slides, IHC, ERG, Box of 100	98 unstained, +2 stained

MOPEC
GROUP

Mopec **MORTECH**
ELEVATING PATHOLOGY MANUFACTURING
www.mopecgroup.com

800.362.8491

800 Tech Row, Madison Heights, MI