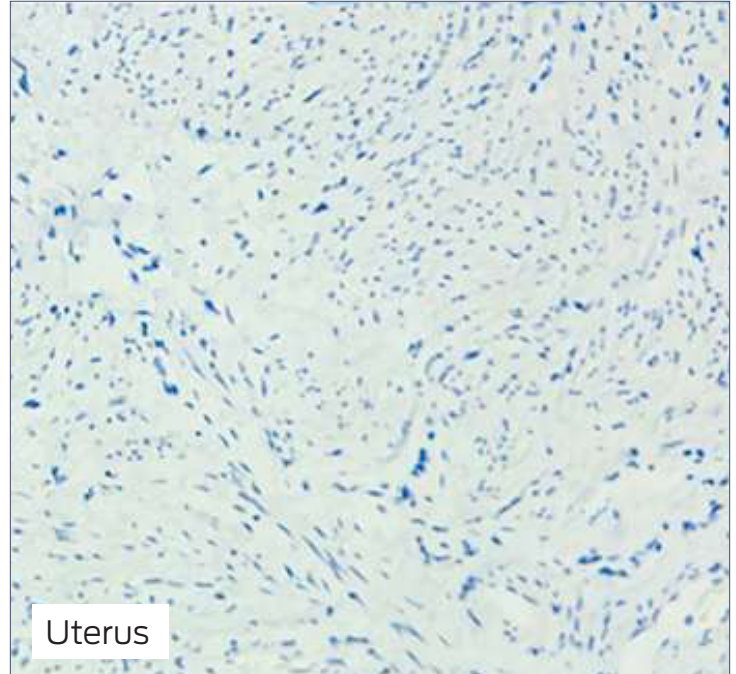
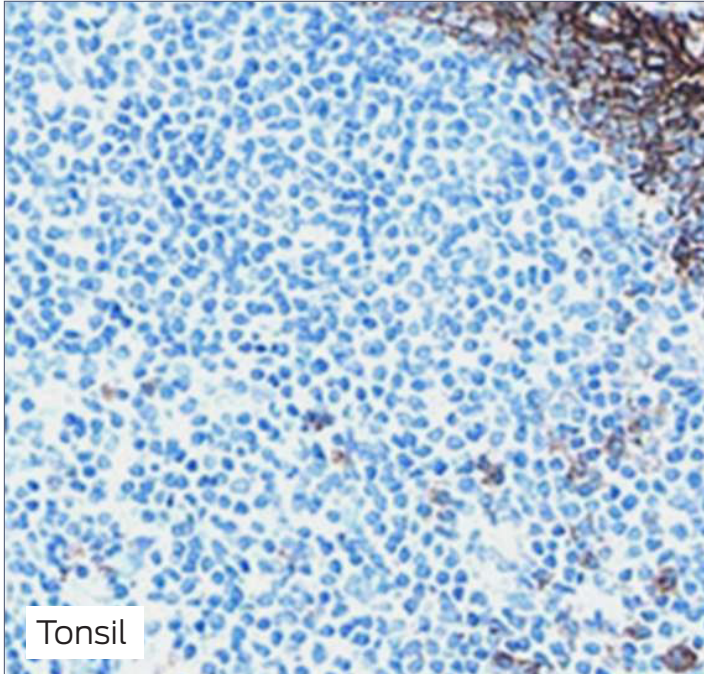


# CD138

Positive tissue controls should only be utilized for monitoring the correct performance of processed tissues and test reagents, rather than as an aid in the interpretation of samples. If the positive tissue controls fail to demonstrate positive staining, results with the test specimens should be considered invalid.



## SPECIFICATIONS

### Tissue

- (+) Human tonsil tissue
- (-) Tissue type varies

### Fixative

- 10% Neutral buffered formalin

### Embedding

- Paraffin

### Thickness

- 4 µm

### Mounting

- Mounted on positively charged slides made of pure white glass; air dried

### Storage Conditions

- RT, light-deprived, humidity-controlled

### Notes

- Deparaffinize and rehydrate before use
- Custom modifications available, including tissue placement, drying method, section thickness, and/or slide glass

## Variations

| Model No. | Description                            | Contains                 |
|-----------|--|--------------------------|
| SC072-25  | Control Slides, IHC, CD138, Box of 25  | 24 unstained + 1 stained |
| SC072-100 | Control Slides, IHC, CD138, Box of 100 | 98 unstained + 2 stained |

**MOPEC**  
GROUP

**Mopec** **MORTECH**  
ELEVATING PATHOLOGY MANUFACTURING

[www.mopecgroup.com](http://www.mopecgroup.com)

800.362.8491

800 Tech Row, Madison Heights, MI