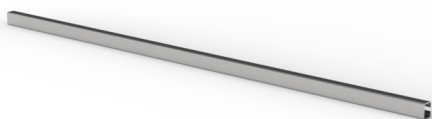


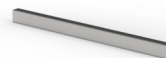
CASEWORK

Apron/Knee Space Rail

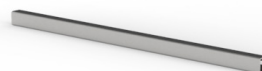
Mopec's Casework Line features durable, modular stainless-steel cabinetry engineered to meet the distinct needs of surgical pathology, autopsy pathology, and laboratory settings. Each unit is built for long-term performance, easy cleaning, and seamless integration into clinical workspaces. Available in a variety of sizes and configurations, Mopec casework ensures efficient, organized, and ergonomic workflow solutions.



LCTBR-7202



LCTBR-3002



LCTBR-3602

SPECIFICATIONS

Construction

- Includes (1) apron rail

Materials

- 304 stainless steel construction with a polished No.4 finish

Dimensions

- LCTBR-3002: 30.0" L x 1.5" D x 2.0" H
- LCTBR-3602: 36.0" L x 1.5" D x 2.0" H
- LCTBR-7202: 72.0" L x 1.5" D x 2.0" H

Performance

- Provide additional strength and stability to cabinets
- Align cabinet doors and drawers to ensure smooth open/close
- Enhance visual appeal of cabinetry
- Serve as mounting points for additional components

Variations

Model No.	Description	Dimensions
LCTBR-3002	Apron/Knee Space Rail, 30"	30" L x 1.5" D x 2" H
LCTBR-3602	Apron/Knee Space Rail, 36"	36" L x 1.5" D x 2" H
LCTBR-7202	Apron/Knee Space Rail, 72"	72" L x 1.5" D x 2" H

MOPEC
GROUP

Mopec
ELEVATING PATHOLOGY

MORTECH
MANUFACTURING

www.mopecgroup.com

800.362.8491

800 Tech Row, Madison Heights, MI