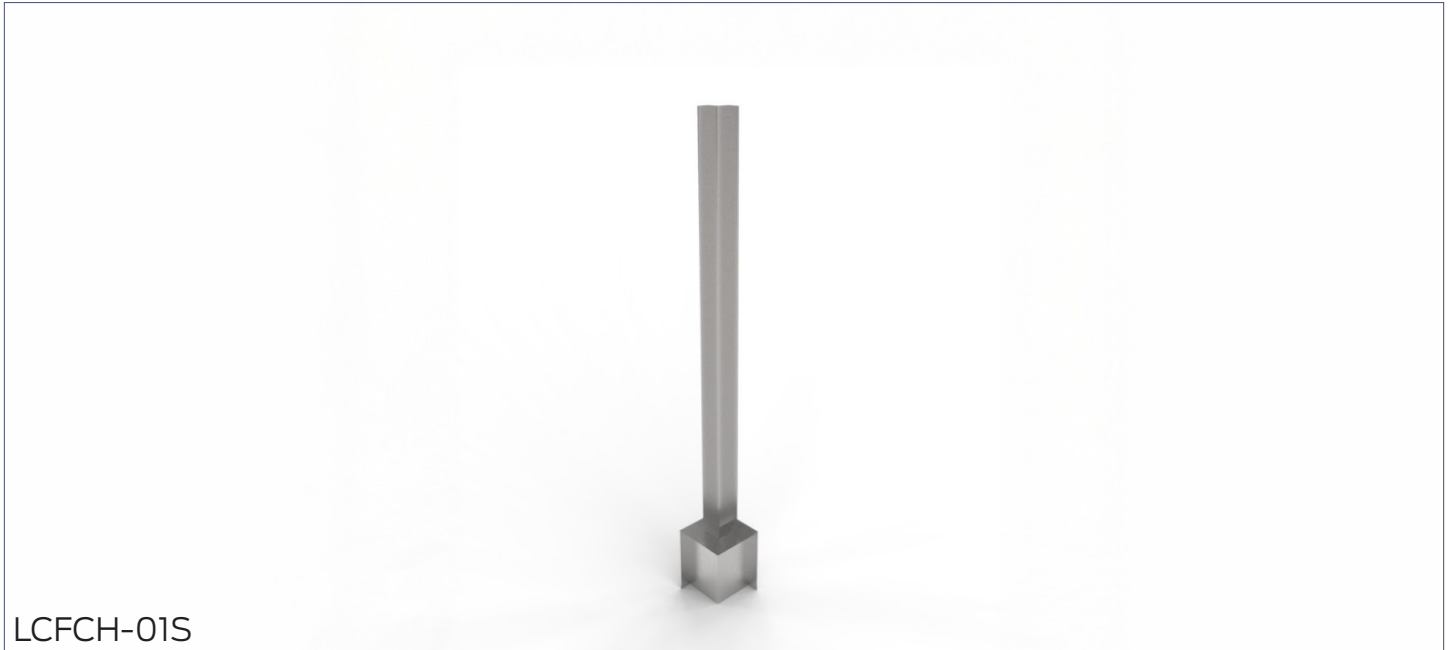


CASEWORK

Inside Corner Filler, Standing Height

Mopec's Casework Line features durable, modular stainless-steel cabinetry engineered to meet the distinct needs of surgical pathology, autopsy pathology, and laboratory settings. Each unit is built for long-term performance, easy cleaning, and seamless integration into clinical workspaces. Available in a variety of sizes and configurations, Mopec casework ensures efficient, organized, and ergonomic workflow solutions.



LCFCH-01S

SPECIFICATIONS

Construction

- (1) Wall Cabinet Filler

Materials

- 304 stainless steel construction with a polished No. 4 finish

Dimensions

- LCFCH-01S: 35.1" L x 1.0" W x 1.0" H

MOPEC
GROUP

Mopec
ELEVATING PATHOLOGY

MORTECH
MANUFACTURING

www.mopecgroup.com

800.362.8491

800 Tech Row, Madison Heights, MI