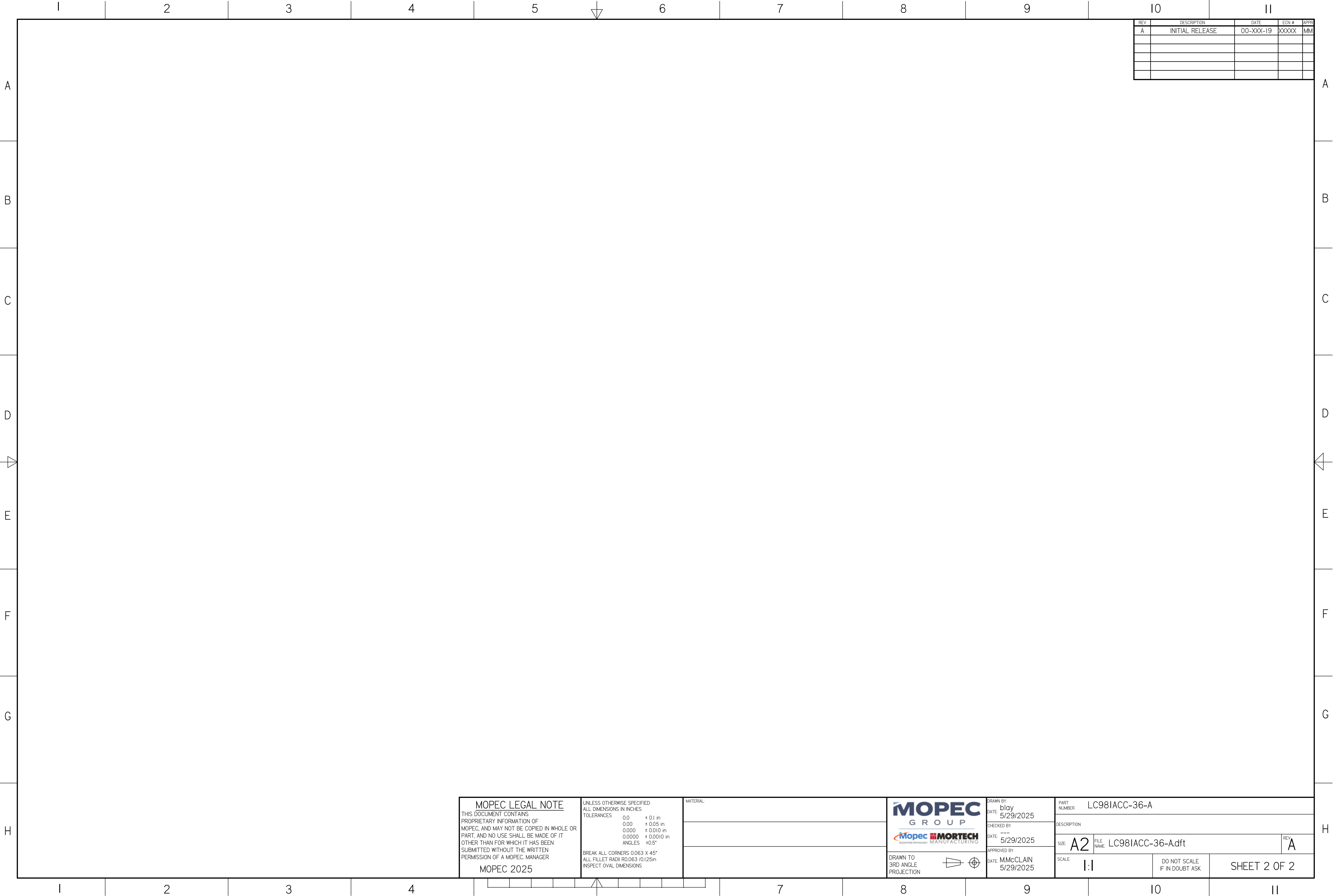


\*LC981ACC-36-A.dft\*



REV	DESCRIPTION	DATE	ECN #	APPR
A	INITIAL RELEASE	00-XXX-19	XXXXX	MM

**MOPEC LEGAL NOTE**

THIS DOCUMENT CONTAINS PROPRIETARY INFORMATION OF MOPEC, AND MAY NOT BE COPIED IN WHOLE OR PART, AND NO USE SHALL BE MADE OF IT OTHER THAN FOR WHICH IT HAS BEEN SUBMITTED WITHOUT THE WRITTEN PERMISSION OF A MOPEC MANAGER

MOPEC 2025



UNLESS OTHERWISE SPECIFIED:  
ALL DIMENSIONS IN INCHES

TOLERANCES

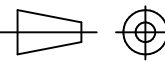
0.0	± 0.1 in
0.00	± 0.05 in
0.000	± 0.010 in
0.0000	± 0.0010 in
ANGLES	±0.5°

BREAK ALL CORNERS 0.063 X 45°  
ALL FILLET RADII R0.063 /0.125in  
INSPECT OVAL DIMENSIONS

MATERIAL



DRAWN TO 3RD ANGLE PROJECTION



DRAWN BY: blay  
DATE: 5/29/2025

CHECKED BY: ---  
DATE: 5/29/2025

APPROVED BY: MMcCLAIN  
DATE: 5/29/2025

PART NUMBER: LC981ACC-36-A

DESCRIPTION:

SIZE: A2	FILE NAME: LC981ACC-36-A.dft	REV: A
----------	------------------------------	--------

SCALE: 1:1	DO NOT SCALE IF IN DOUBT ASK	SHEET 2 OF 2
------------	------------------------------	--------------