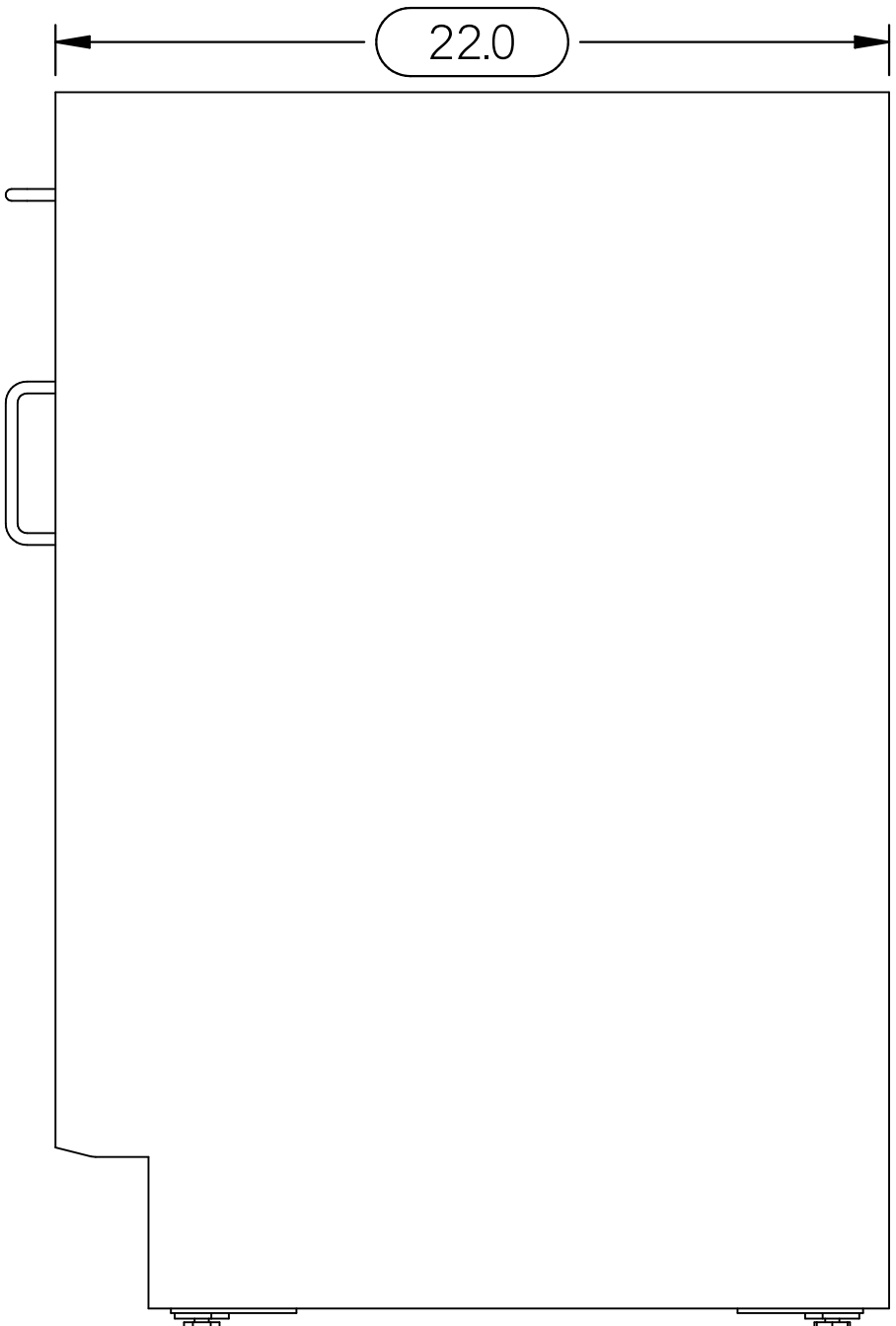
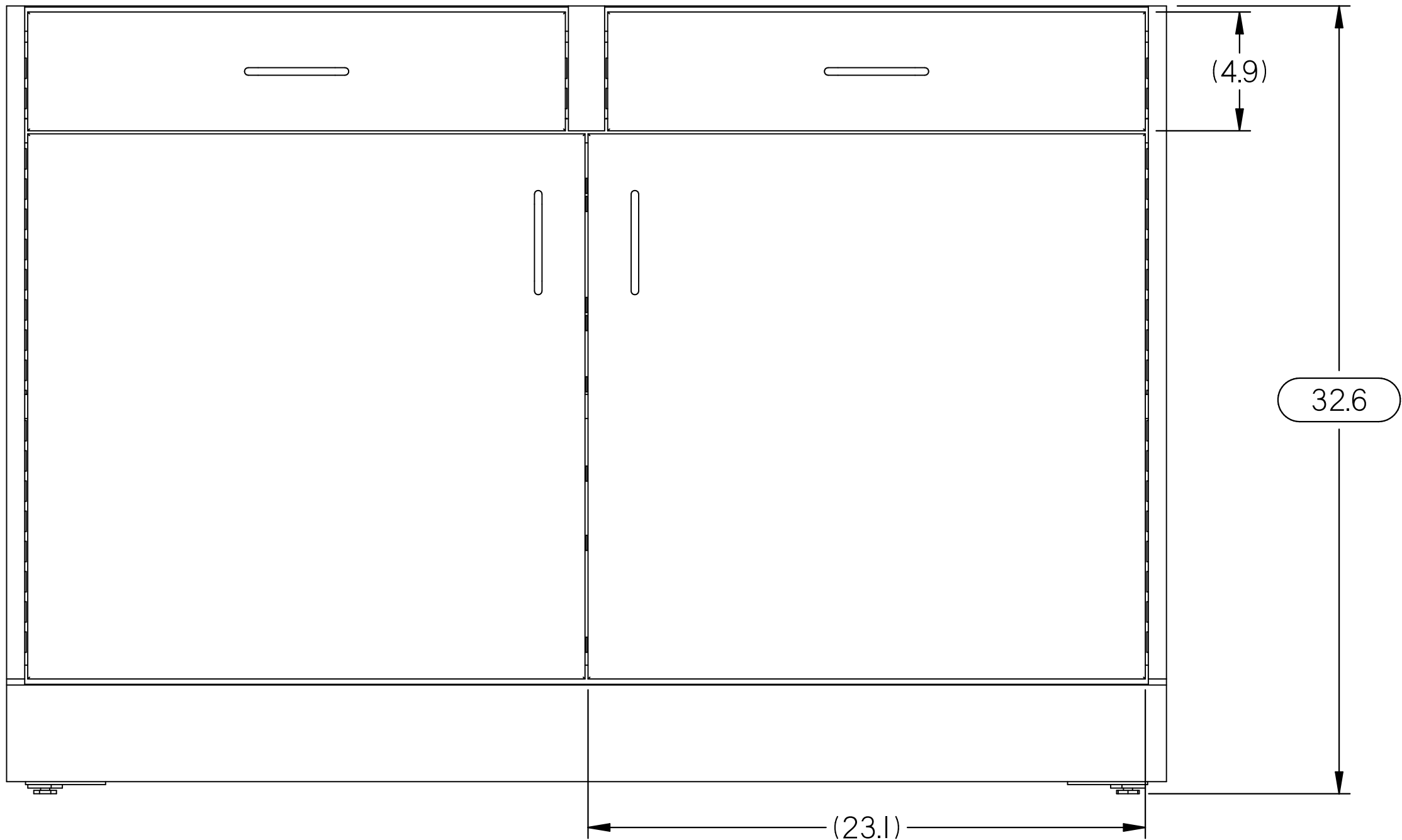
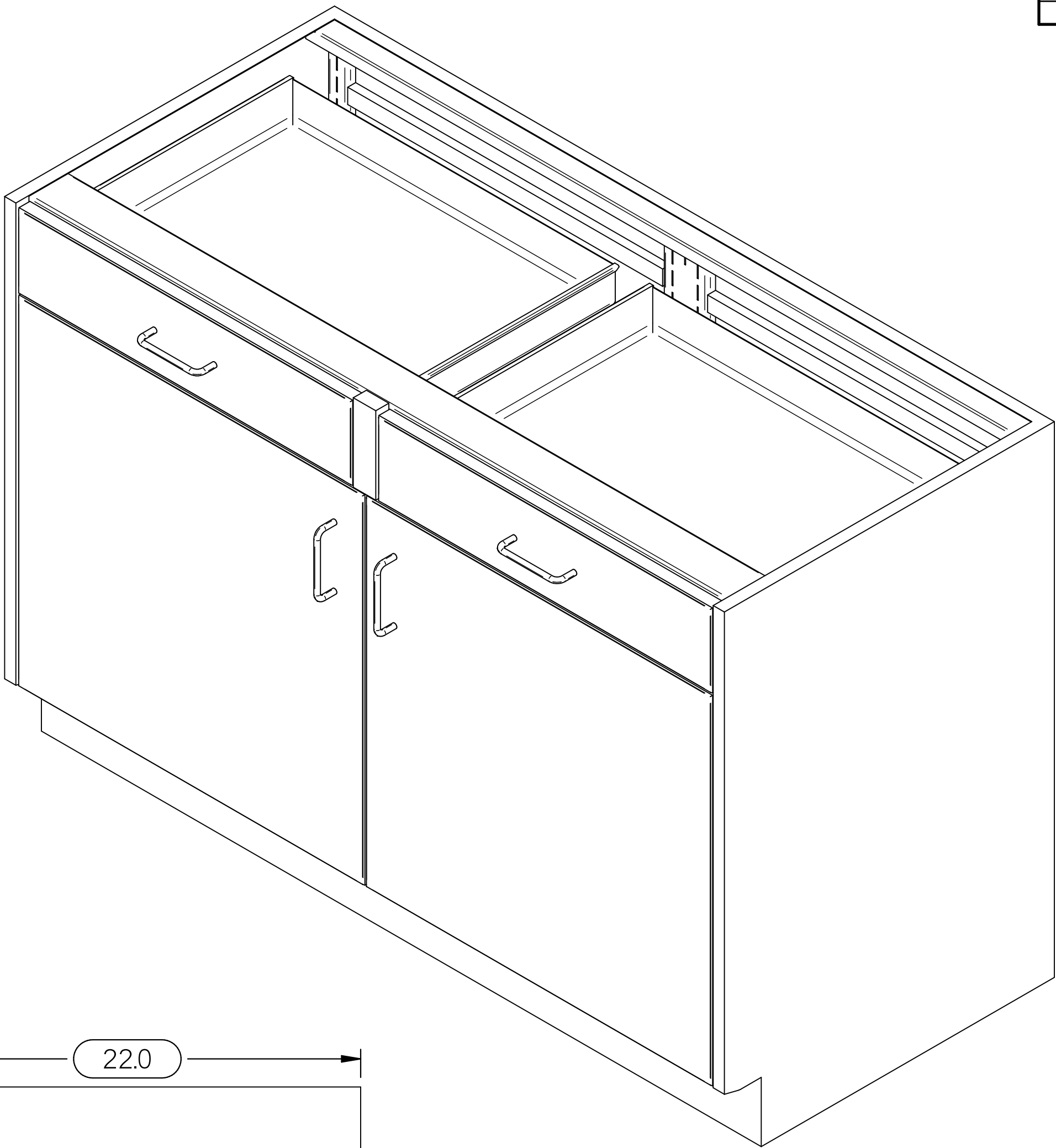
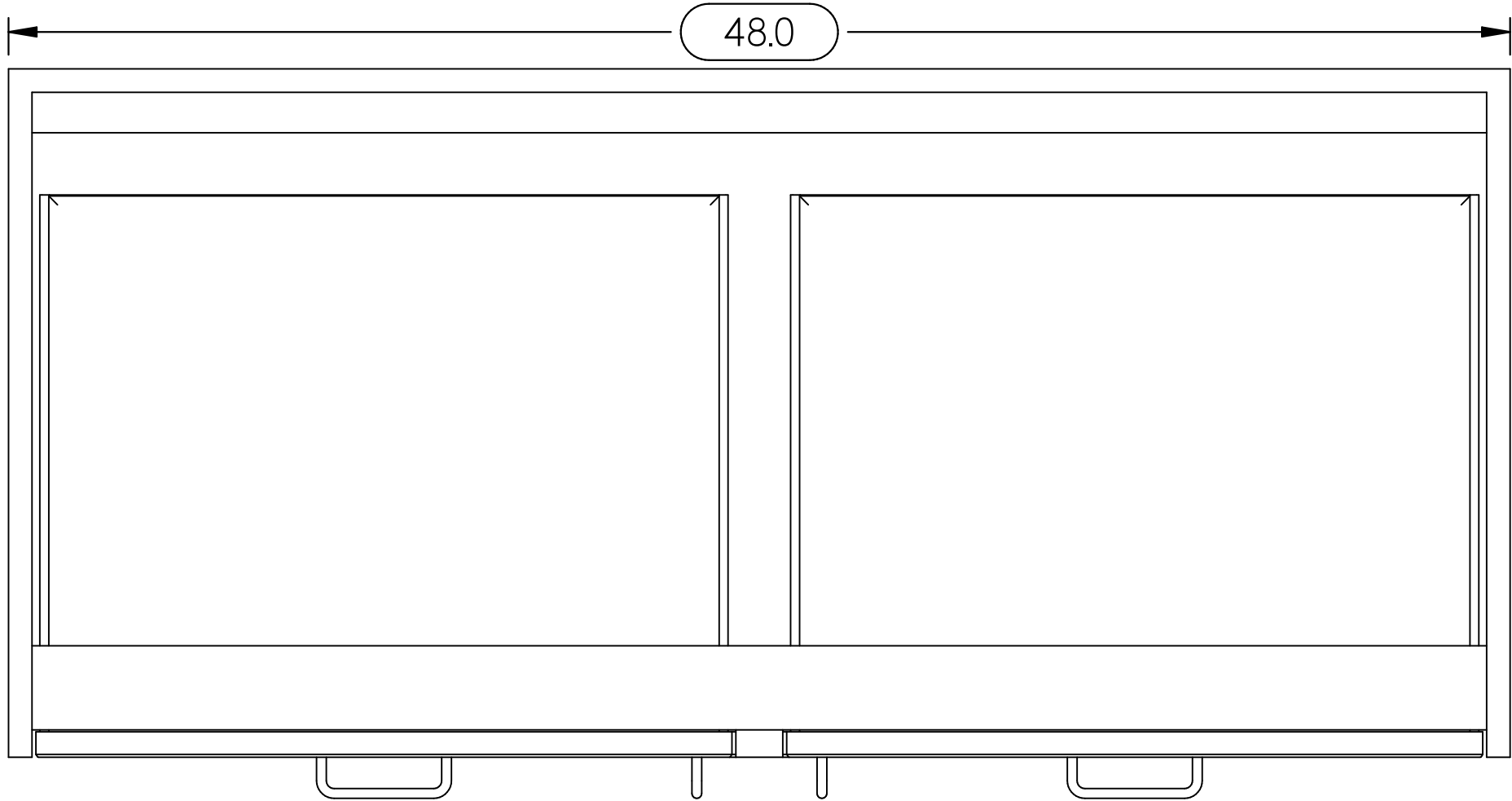


A
B
C
D
E
F
G
H

A
B
C
D
E
F
G
H

REV	DESCRIPTION	DATE	ECN #	APPR
A	INITIAL RELEASE	00-XXX-19	XXXXX	MM



MOPEC LEGAL NOTE

THIS DOCUMENT CONTAINS PROPRIETARY INFORMATION OF MOPEC, AND MAY NOT BE COPIED IN WHOLE OR PART, AND NO USE SHALL BE MADE OF IT OTHER THAN FOR WHICH IT HAS BEEN SUBMITTED WITHOUT THE WRITTEN PERMISSION OF A MOPEC MANAGER

MOPEC 2025

UNLESS OTHERWISE SPECIFIED:
ALL DIMENSIONS IN INCHES

TOLERANCES

0.0	± 0.1 in
0.00	± 0.05 in
0.000	± 0.010 in
0.0000	± 0.0010 in
ANGLES	± 0.5°

BREAK ALL CORNERS 0.063 X 45°
ALL FILLET RADII R0.063 (0.125in)
INSPECT OVAL DIMENSIONS

MATERIAL

MOPEC GROUP

MOPEC MORTTECH
subcontract technology MANUFACTURING

DRAWN TO 3RD ANGLE PROJECTION

DRAWN BY: blay
DATE: 5/29/2025

CHECKED BY: ---
DATE: 5/29/2025

APPROVED BY: M.McCLAIN
DATE: 5/29/2025

PART NUMBER: LC906-48S-A

DESCRIPTION

SIZE: A2
FILE NAME: LC906-48S-A.dft

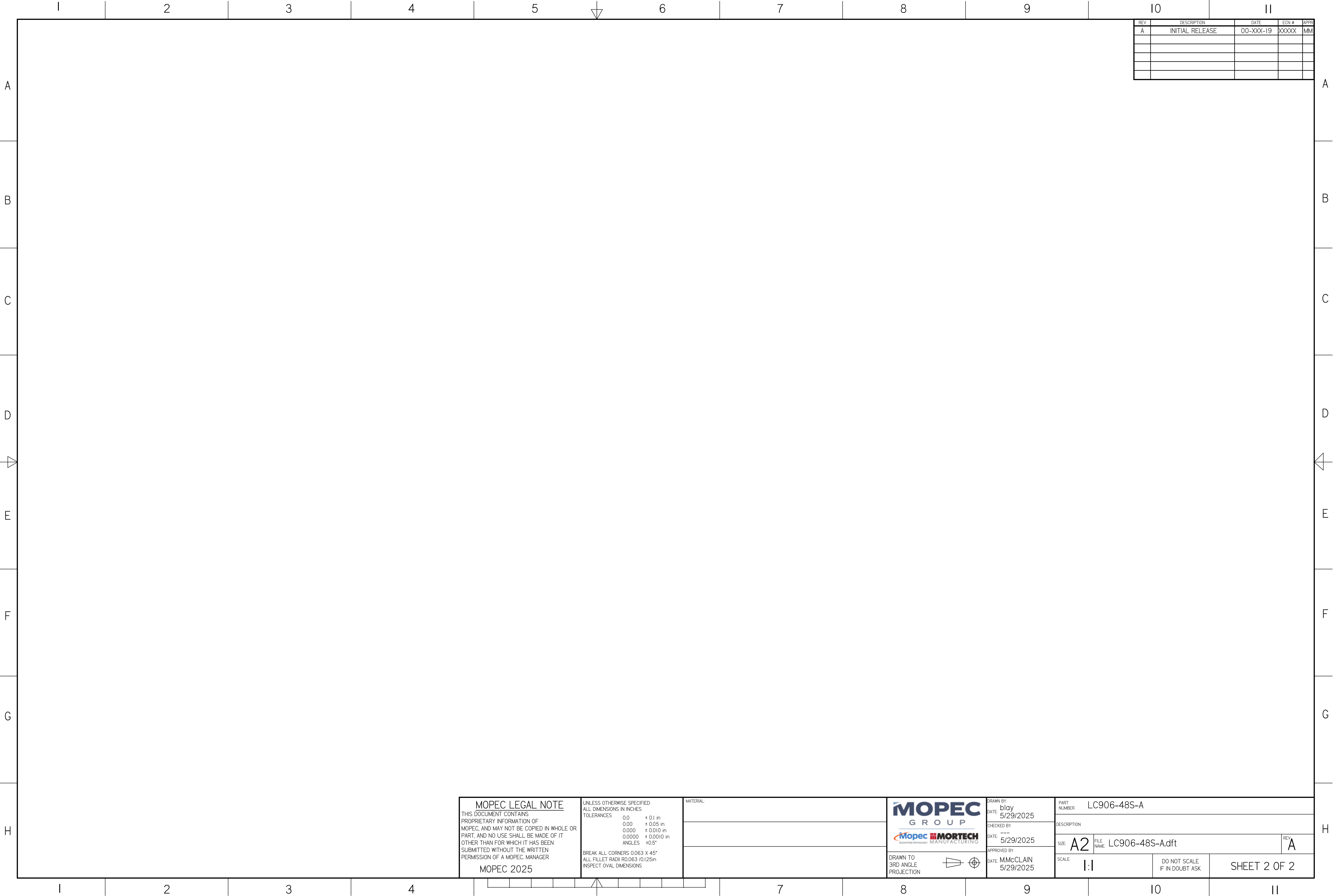
SCALE: 1:2

DO NOT SCALE IF IN DOUBT ASK

SHEET 1 OF 2

REV: A

LC906-48S-A.dft



LC906-48S-A.dft