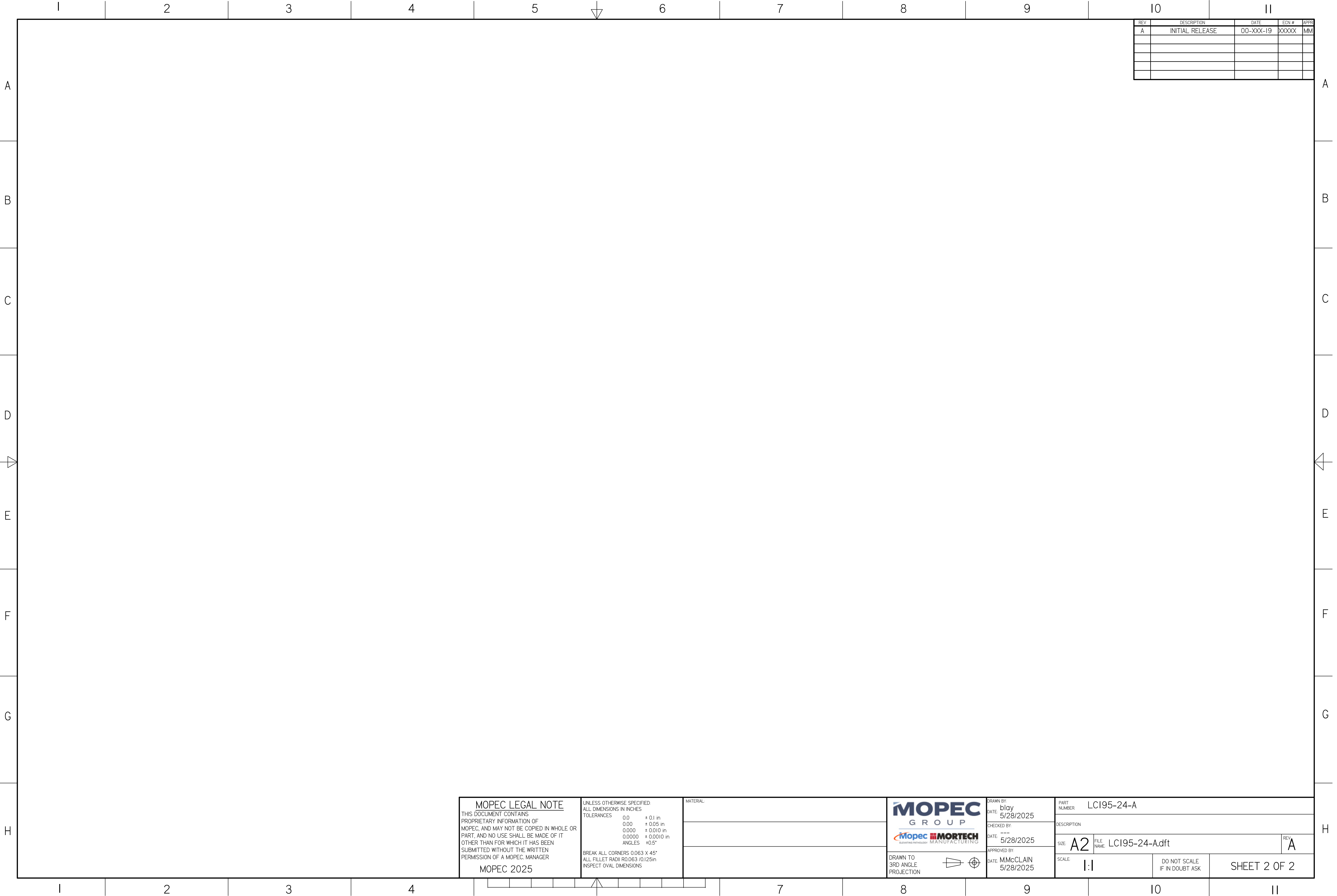


REV	DESCRIPTION	DATE	ECN #	APPR
A	INITIAL RELEASE	00-XXX-19	XXXXX	MM

<b>MOPEC LEGAL NOTE</b> THIS DOCUMENT CONTAINS PROPRIETARY INFORMATION OF MOPEC, AND MAY NOT BE COPIED IN WHOLE OR PART, AND NO USE SHALL BE MADE OF IT OTHER THAN FOR WHICH IT HAS BEEN SUBMITTED WITHOUT THE WRITTEN PERMISSION OF A MOPEC MANAGER MOPEC 2025		UNLESS OTHERWISE SPECIFIED: ALL DIMENSIONS IN INCHES TOLERANCES 0.0 ± 0.1 in 0.00 ± 0.05 in 0.000 ± 0.010 in 0.0000 ± 0.0010 in ANGLES ±0.5° BREAK ALL CORNERS 0.063 X 45° ALL FILLET RADII R0.063 /0.125in INSPECT OVAL DIMENSIONS	MATERIAL		<b>MOPEC GROUP</b> <b>MORTECH</b> <small>ADVANCED TECHNOLOGY MANUFACTURING</small>	DRAWN BY: blay DATE: 5/28/2025 CHECKED BY: --- DATE: 5/28/2025 APPROVED BY: M.McCLAIN DATE: 5/28/2025	PART NUMBER: LC195-24-A	DESCRIPTION		SIZE: A2	FILE NAME: LC195-24-A.dft	REV: A
					DRAWN TO 3RD ANGLE PROJECTION		SCALE: 1:2	DO NOT SCALE IF IN DOUBT ASK	SHEET 1 OF 2			

\*LC195-24-A.dft\*



**MOPEC LEGAL NOTE**  
THIS DOCUMENT CONTAINS  
PROPRIETARY INFORMATION OF  
MOPEC, AND MAY NOT BE COPIED IN WHOLE OR  
PART, AND NO USE SHALL BE MADE OF IT  
OTHER THAN FOR WHICH IT HAS BEEN  
SUBMITTED WITHOUT THE WRITTEN  
PERMISSION OF A MOPEC MANAGER  
MOPEC 2025

UNLESS OTHERWISE SPECIFIED:  
ALL DIMENSIONS IN INCHES  
TOLERANCES  
0.0 ± 0.1 in  
0.00 ± 0.05 in  
0.000 ± 0.010 in  
0.0000 ± 0.0010 in  
ANGLES ±0.5°  
BREAK ALL CORNERS 0.063 X 45°  
ALL FILLET RADII R0.063 /0.125in  
INSPECT OVAL DIMENSIONS

MATERIAL



DRAWN TO  
3RD ANGLE  
PROJECTION



DRAWN BY:  
DATE: blay 5/28/2025  
CHECKED BY:  
DATE: --- 5/28/2025  
APPROVED BY:  
DATE: MMcCLAIN 5/28/2025

PART  
NUMBER LC195-24-A

DESCRIPTION  
SIZE: A2  
FILE NAME: LC195-24-A.dft

REV: A

SCALE: 1:1

DO NOT SCALE  
IF IN DOUBT ASK

SHEET 2 OF 2

\*LC195-24-A.dft\*