

REV	DESCRIPTION	DATE	ECN #	APPR
A	INITIAL RELEASE	00-XXX-19	XXXXX	MM

MOPEC LEGAL NOTE

THIS DOCUMENT CONTAINS PROPRIETARY INFORMATION OF MOPEC, AND MAY NOT BE COPIED IN WHOLE OR PART, AND NO USE SHALL BE MADE OF IT OTHER THAN FOR WHICH IT HAS BEEN SUBMITTED WITHOUT THE WRITTEN PERMISSION OF A MOPEC MANAGER

MOPEC 2025

UNLESS OTHERWISE SPECIFIED:
ALL DIMENSIONS IN INCHES

TOLERANCES

0.0	± 0.1 in
0.00	± 0.05 in
0.000	± 0.010 in
0.0000	± 0.0010 in
ANGLES	± 0.5°

BREAK ALL CORNERS 0.063 X 45°
ALL FILLET RADII R0.063 / 0.125 in
INSPECT OVAL DIMENSIONS

MATERIAL

MOPEC GROUP

MOPEC MORTTECH
subcontractor MANUFACTURING

DRAWN TO 3RD ANGLE PROJECTION

DRAWN BY: blay
DATE: 5/27/2025

CHECKED BY: ---
DATE: 5/27/2025

APPROVED BY: M.McCLAIN
DATE: 5/27/2025

PART NUMBER: LC106-48S-A

DESCRIPTION:

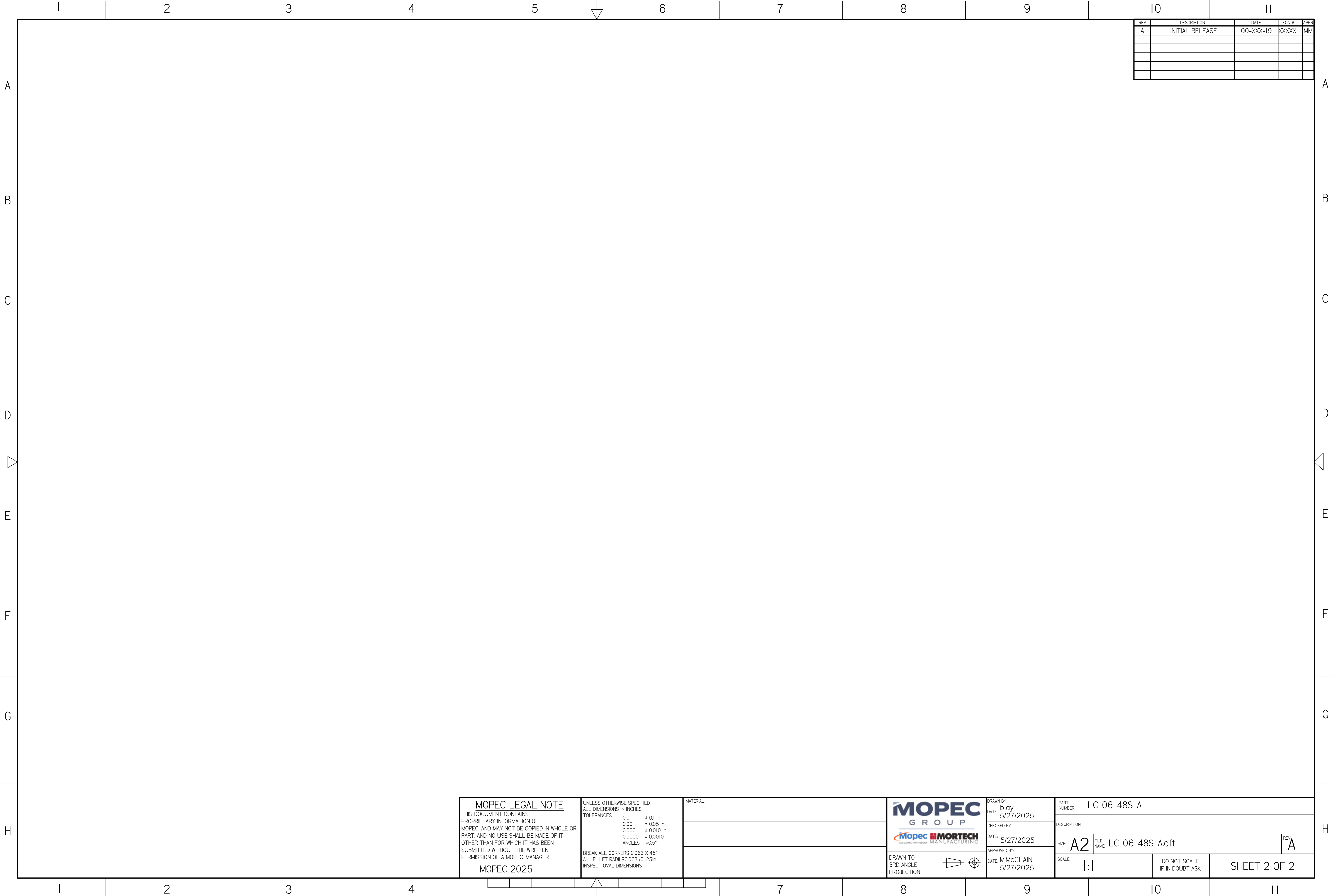
SIZE: A2	FILE NAME: LC106-48S-A.dft	REV: A
----------	----------------------------	--------

SCALE: 1:2

DO NOT SCALE IF IN DOUBT ASK

SHEET 1 OF 2

LC106-48S-A.dft



MOPEC LEGAL NOTE
THIS DOCUMENT CONTAINS
PROPRIETARY INFORMATION OF
MOPEC, AND MAY NOT BE COPIED IN WHOLE OR
PART, AND NO USE SHALL BE MADE OF IT
OTHER THAN FOR WHICH IT HAS BEEN
SUBMITTED WITHOUT THE WRITTEN
PERMISSION OF A MOPEC MANAGER
MOPEC 2025

UNLESS OTHERWISE SPECIFIED:
ALL DIMENSIONS IN INCHES
TOLERANCES
0.0 ± 0.1 in
0.00 ± 0.05 in
0.000 ± 0.010 in
0.0000 ± 0.0010 in
ANGLES ±0.5°
BREAK ALL CORNERS 0.063 X 45°
ALL FILLET RADII R0.063 (0.125in)
INSPECT OVAL DIMENSIONS

MATERIAL



DRAWN TO
3RD ANGLE
PROJECTION



DRAWN BY:
DATE: blay 5/27/2025
CHECKED BY:
DATE: --- 5/27/2025
APPROVED BY:
DATE: M/McCLAIN 5/27/2025

PART
NUMBER: LC106-48S-A

DESCRIPTION
SIZE: A2
FILE NAME: LC106-48S-A.dft
REV: A

SCALE: 1:1
DO NOT SCALE
IF IN DOUBT ASK
SHEET 2 OF 2

LC106-48S-A.dft